

# Din Rail UPS

POWERCOM Din Rail UPS combine easy operating design, multi-function operation and supports power protection on industrial equipment.



## Features & Applications

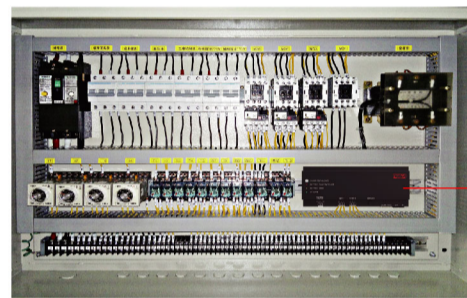
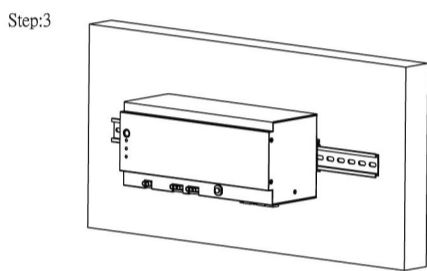
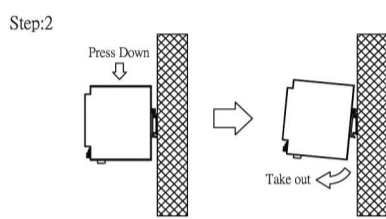
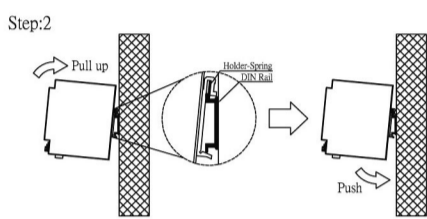
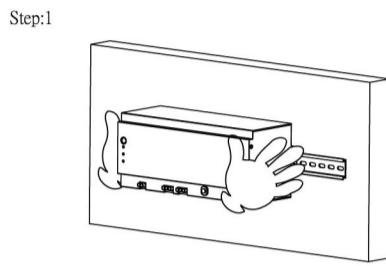
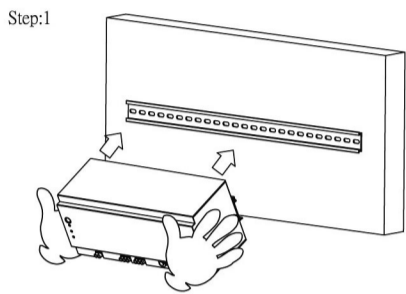
- Light weight and compact industrial design
- Din rail mounting design
- Remote on / off control
- Cold start capability
- Surge, overload, short circuit protection
- RJ45 / RJ11 Tel-communication protection
- RS232 Communication Port

- SNMP card / Modbus card / Dry Contact Relay Box (Option)

### Application :

- Factory automation control system
- Robotic machine
- Conveying equipment

## Mounting & Removal



POWERCOM DRU UPS

Power control cabinet

# Industrial Din Rail UPS

## Front Panel



1. Din rail mount brackets
2. RJ45 / RJ11 Tel-communication protection
3. RS232 communication port
4. Input circuit breaker
5. Input / output screw connectors
6. Remote on / off connectors
7. LED indicators  
Battery warning or overload indicator (Red)  
On battery mode indicator (Yellow)  
AC input (Green)
8. Power ON, OFF and Test bottom
9. AUX DC Output: Output DC power
10. Option : SNMP card / Modbus card / Dry Contact Relay Box



## Specification

Model	DRU-500	DRU-850
<b>Configuration</b>		
Capacity (VA)	500VA	850 VA
Capacity (Watts)	300 W	510 W
Form	Din Rail Mounting Type	
<b>Input</b>		
Voltage	100 / 110 / 120 VAC or 220 / 230 / 240 VAC	
Input Voltage Range	85 - 138 or 165 - 276 VAC	
Input Frequency Range	50 Hz / 60 Hz (Auto Sensing)	
<b>Output</b>		
Waveform	Simulated Sine Wave	
Voltage	100 / 110 / 120 VAC or 220 / 230 / 240 VAC	
Frequency	50 Hz / 60 Hz ± 0.3 Hz	
Transfer Time	2 - 4 ms (Typical)	
<b>Protection</b>		
Full Protection	Overload, Surge, Short Circuit	
Tele Communication	RJ11 / RJ45	
<b>Battery</b>		
Type	12V 7.2Ah	12V 9Ah
Quantity	1	1
Sealed, Maintenance Free	Yes	
Typical Recharge Time	8 hr to 90%	
<b>Management &amp; Communication</b>		
Indicator	LED Panel	
Communication Port	RS232	
Communication	Option : SNMP card / Modbus card / Dry Contact Relay Box	
<b>Physical</b>		
Dimensions (WxDxH) (mm)	282 x 110 x 124	
Weight (kgs)	4.3	4.9
Shipping Dimensions (mm)	381 x 243 x 231	
Shipping Weight (kgs)	5.1	5.7
<b>Alarm</b>		
Overload / Fault	Continuous Beeping	
Battery Mode	Beep every 4 seconds	
Low Battery	Beep every 0.5 second	
<b>Environment</b>		
Operating Humidity	0-90 % RH at 0-40°C (Non-condensing)	
Audible Noise	Less than 40 dB	

\* Specifications are subject to change without further notice.

\* Specifications are for reference, actual information should be based on real product.